



# A General Guide for International Students

CAMPUS GUIDE



Kinjo University &  
Kinjo College





# Kinjo University & Kinjo College

We provide comprehensive support for international students to make their life in Japan comfortable, including scholarships and support for studying and issues related to everyday life. We are looking forward to having you at our university/college!

## Fulfilling Study Abroad Experience

We provide many fun opportunities for international students to experience Japanese culture. We also hold a variety of events throughout the year for international and Japanese students to have a good time together and deepen their mutual understanding.

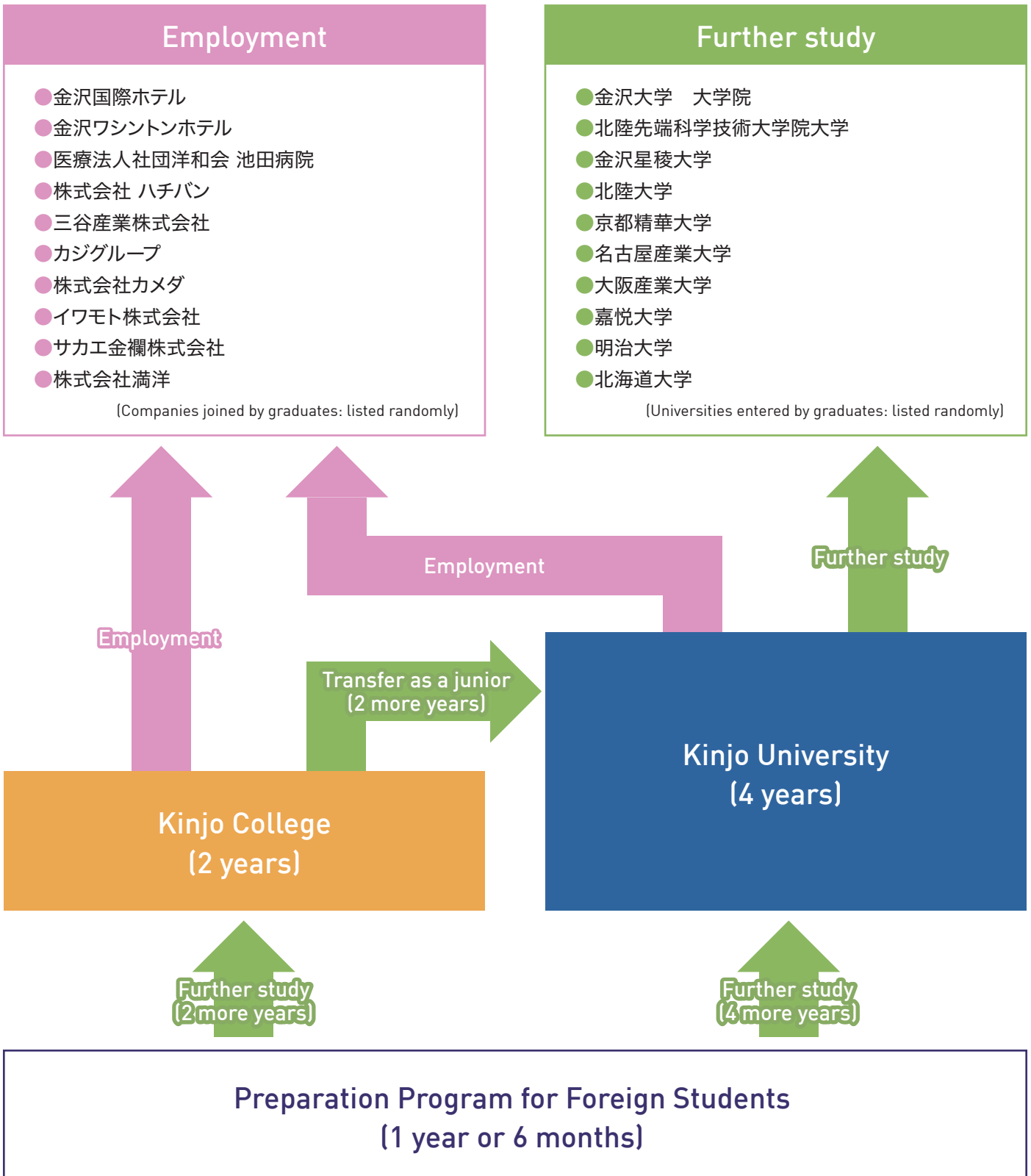


## Annual Events

April	May	June	July	Aug.	Sep.
<ul style="list-style-type: none"> <li>- Entrance Ceremony</li> <li>- New Student Orientation</li> <li>- International Students Meeting</li> </ul>			<ul style="list-style-type: none"> <li>- International Students Meeting</li> </ul>	<ul style="list-style-type: none"> <li>- Summer Vacation (until mid-Sep.)</li> </ul>	<ul style="list-style-type: none"> <li>- Second Semester Orientation</li> <li>- Field Trip</li> <li>- International Students Meeting</li> </ul>
Oct.	Nov.	Dec.	Jan.	Feb.	March
<ul style="list-style-type: none"> <li>- Kinjo Festival</li> </ul>		<ul style="list-style-type: none"> <li>- Christmas Party</li> <li>- Winter Vacation (until early Jan.)</li> </ul>	<ul style="list-style-type: none"> <li>- International Students Meeting</li> </ul>		<ul style="list-style-type: none"> <li>- Graduation Ceremony</li> <li>- Spring Vacation</li> </ul>

# Future Options

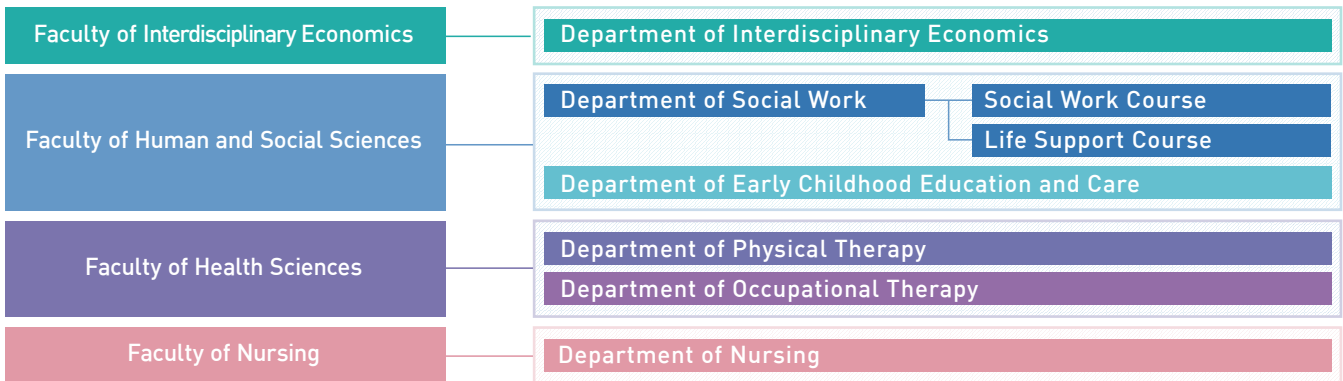
After graduating our university/college, students have many options whether they choose to start working or continue studying in Japan.





# Organization

## Kinjo University



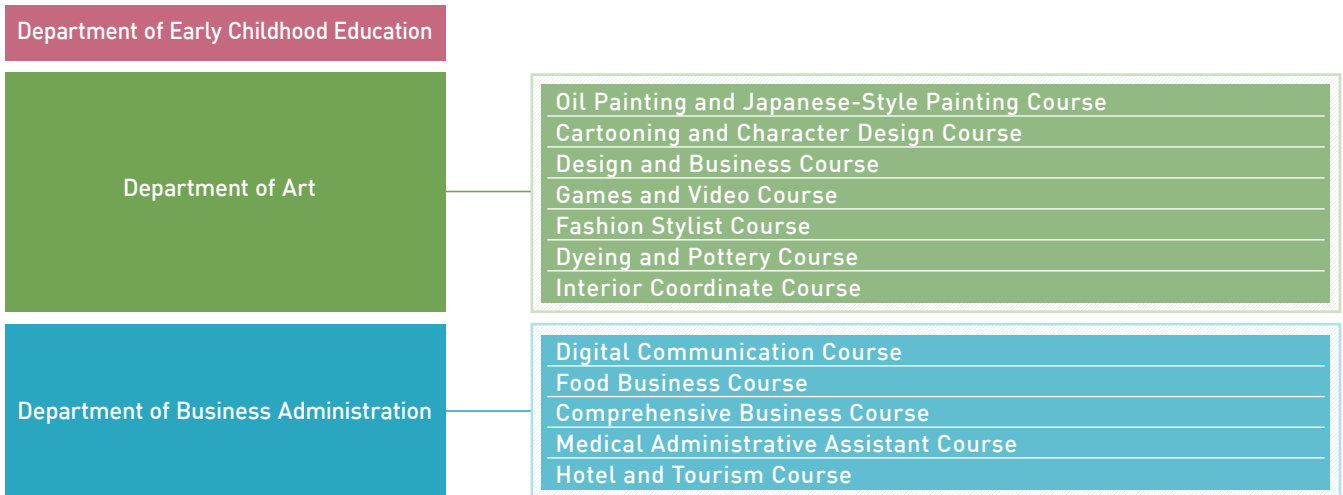
## Kinjo University Advanced Course



## Kinjo University Graduate School



## Kinjo College



## Preparation Program for Foreign Students



# Overview & Features

Kinjo University

## Faculty of Interdisciplinary Economics

[https://www.kinjo.ac.jp/english/academics/department\\_u.html#a01](https://www.kinjo.ac.jp/english/academics/department_u.html#a01)



### Department of Interdisciplinary Economics

Nurtures competent individuals who will be active in a wide range of fields. Specifically, students gain skills to solve local economic problems by utilizing data science, as well as abilities to identify and solve issues independently.

#### Features

- ★A comprehensive curriculum covering economics and business administration as well as environmental studies, health sciences, and information literacy
- ★Problem-Based Learning (PBL) training in collaboration with over 100 companies for developing problem-solving skills at an actual worksite
- ★Students build a network with companies during their 4 years and are provided extensive career support.



## Faculty of Human and Social Sciences

[https://www.kinjo.ac.jp/english/academics/department\\_u.html#a02](https://www.kinjo.ac.jp/english/academics/department_u.html#a02)



### Department of Social Work

Students gain the skills to provide welfare services for people of all ages in the community.

#### Features

- ★Covering a wide range of fields, students gain the spirit of welfare and knowledge on government programs, social welfare assistance skills, psychology, as well as the basics of medicine.
- ★Students develop advanced care giving skills to be provided based on the care receiver's physical and mental conditions. They will also become qualified for taking the national examinations for becoming a Certified Care Giver and a Certified Social Worker.
- ★Students broaden their future career options by developing high-level communication skills and improving personal qualities needed for their future job.



### Department of Early Childhood Education and Care

\* The international students special selection application is not accepted at the Department of Early Childhood Education and Care.

Students gain knowledge on childcare to boost children's development based on a social welfare perspective.

#### Features

- ★Nurtures childcare and early education providers who communicate with the parents, guardians, and community members from a social welfare perspective.
- ★Kinjo Gakuen has a long history as a training school of early childhood education and care providers.
- ★Future career options are broadened by becoming qualified to take the national examinations for triple licenses (Daycare Worker Qualification, Kindergarten Teacher Type 1 License, and Certified Social Worker).



## Faculty of Health Sciences

[https://www.kinjo.ac.jp/english/academics/department\\_u.html#a05](https://www.kinjo.ac.jp/english/academics/department_u.html#a05)



### Department of Physical Therapy

Nurtures compassionate and flexible physical therapists with an extensive support structure.

#### Features

- ★ Learning in small groups led by instructors who provide extensive support, students are able to thoroughly prepare for the national qualification examination.
- ★ Community support projects for hands-on physical therapy training
- ★ Students can further deepen their expertise at our graduate school specializing in physical therapy.



### Department of Occupational Therapy

Nurtures occupational therapists with broad medical knowledge who help patients achieve their recovery goals.

#### Features

- ★ Students are assessed by the Objective Structured Clinical Examination (OSCE) for gaining on-site knowledge of physical therapy from actual cases.
- ★ Over 100 partner training facilities / Practical training hours that exceed the international standard
- ★ With the goal of having all students pass the national qualification examination, instructors provide comprehensive guidance.



## Faculty of Nursing

[https://www.kinjo.ac.jp/english/academics/department\\_u.html#a08](https://www.kinjo.ac.jp/english/academics/department_u.html#a08)



### Department of Nursing

\* The international students special selection application is not accepted.

Nurtures highly competent nurses who are capable of assisting advanced medical practices.

#### Features

- ★ Four years of specialized nursing education
- ★ Practical training using a simulator at clinical sites
- ★ Collaborative learning with faculties of the welfare and health fields / Students develop the skills to provide multidisciplinary team-based care.



## Advanced Course of Public Health Nursing, Kinjo University

[https://www.kinjo.ac.jp/english/academics/department\\_u.html#a09](https://www.kinjo.ac.jp/english/academics/department_u.html#a09)



\* The international students special selection application is not accepted.

Nurtures competent individuals who can identify and understand community health issues, and appropriately solve those issues.

#### Features

- ★ A one-year program specializing in training students to become public health nurses
- ★ A one-year continuous practical training
- ★ Students can attend undergraduate classes



## Kinjo University Graduate School Graduate School of Comprehensive Rehabilitation Course of Comprehensive Rehabilitation

<https://www.kinjo.ac.jp/english/academics/graduate.html>



\* The international students special selection application is not accepted.

Nurtures highly specialized experts of rehabilitation fields.

#### Features

- ★ An education system for enhancing practical skills to foster next-generation leaders
- ★ Day and night classes & an extended class scheduling system for working students
- ★ Comparatively low tuition and scholarship programs for reducing students' financial burden



## Department of Early Childhood Education

[https://www.kinjo.ac.jp/english/academics/department\\_c.html#a01](https://www.kinjo.ac.jp/english/academics/department_c.html#a01)



Students refine their practical skills for early childhood education.

### Features

- ★ Possible to obtain both the national Daycare Worker Qualification and Kindergarten Teacher License.
- ★ Meticulous guidance and extensive education through training / Practical training at the kids' room, Oyako Hiroba
- ★ A special program, KINJO Tokka, for enhancing students' expertise



## Department of Art

[https://www.kinjo.ac.jp/english/academics/department\\_c.html#a02](https://www.kinjo.ac.jp/english/academics/department_c.html#a02)



A fully established art department for deeply exploring art in two years.

### Features

- ★ The only art department among those of the two-year colleges in the Hokuriku region that produces artists and art experts
- ★ Students get to experience all of the department's 7 courses in the first semester of their first year.
- ★ Students develop creativity as well as proposing, problem-solving, information communication, and presentation skills through open auditions.



## Department of Business Administration

[https://www.kinjo.ac.jp/english/academics/department\\_c.html#a03](https://www.kinjo.ac.jp/english/academics/department_c.html#a03)



Students develop a wide range of business skills.

### Features

- ★ Students can freely choose classes through the field unit system, Cafeteria Style Class Registration System.
- ★ Possible to acquire many qualifications for broadening future career options.
- ★ Four distinctive courses: Digital Communication, Medical Administrative Assistant, Hotel and Tourism, and Comprehensive Business.



## Preparation Program for Foreign Students

[https://www.kinjo.ac.jp/english/academics/department\\_c.html#a04](https://www.kinjo.ac.jp/english/academics/department_c.html#a04)



Students learn Japanese language comprehensively to prepare for entering our university or college. In addition to Japanese language skills, students learn everything about Japan including its culture, manners, and customs.





# Tuition and Fees & Scholarships

## Tuition and Fees

\* Our tuition reduction scholarship has been applied to the tuition figures below.

(Unit: Yen)

	Faculty and Department			Enrollment fee	Tuition	Education enhancement fee	Training fee	Total
University	Faculty of Interdisciplinary Economics	Department of Interdisciplinary Economics	1st year	200,000	340,000	320,000	-	860,000
			2nd year	-	340,000	320,000	-	660,000
			3rd year	-	340,000	320,000	-	660,000
			4th year	-	340,000	320,000	-	660,000
	Faculty of Human and Social Sciences	Department of Social Work	1st year	200,000	325,000	320,000	-	845,000
			2nd year	-	325,000	320,000	60,000 * Life Support Course	705,000
			3rd year	-	325,000	320,000	60,000	705,000
			4th year	-	325,000	320,000	-	645,000
	Faculty of Health Sciences	Department of Physical Therapy Department of Occupational Therapy	1st year	200,000	480,000	320,000	200,000	1,200,000
			2nd year	-	480,000	320,000	250,000	1,050,000
			3rd year	-	480,000	320,000	250,000	1,050,000
			4th year	-	480,000	320,000	250,000	1,050,000
College	Department of Business Administration		1st year	200,000	310,000	310,000	-	820,000
			2nd year	-	310,000	310,000	-	620,000
	Department of Art		1st year	200,000	310,000	310,000	-	820,000
			2nd year	-	310,000	310,000	-	620,000
	Department of Early Childhood Education		1st year	200,000	310,000	310,000	56,000	876,000
			2nd year	-	310,000	310,000	-	620,000
	Preparation Program for Foreign Students		Entering in April	100,000	500,000	-	-	600,000
			Entering in Oct.	100,000	250,000	-	-	350,000

In addition to the above fees, you will be charged student activity support fees, Alumni Association perpetual membership fee, and other fees. You will also need to pay for textbooks and educational materials.

Please check our website for details.

▶ <https://www.kinjo.ac.jp/ku/admissions/pdf/gakuhi.pdf>





# Scholarships for International Students

## Our Tuition Reduction Scholarship

We have a tuition reduction scholarship program for physically and mentally healthy international students paying for their own education who are eager to study hard. Apply for the scholarship during the enrolment period and you will be given a 50% discount on tuition annually. However, the scholarship will be cancelled if your academic performance is poor or your attitude is bad.

**Faculty of Interdisciplinary Economics**

Tuition (annual)	Education enhancement fee (annual)	Total (annual)
¥680,000	¥320,000	¥1,000,000

↓

**International Students**

**A special scholarship for international students:  
A 50% discount on tuition!**

Tuition (annual)	Education enhancement fee (annual)	Total (annual)
¥340,000	¥320,000	¥660,000

The 4-year total is: ¥4,000,000 → **¥2,640,000**

**Department of Art**

Tuition (annual)	Education enhancement fee (annual)	Total (annual)
¥620,000	¥310,000	¥930,000

↓

**International Students**

**A special scholarship for international students:  
A 50% discount on tuition!**

Tuition (annual)	Education enhancement fee (annual)	Total (annual)
¥310,000	¥310,000円	¥620,000

The 2-year total is: ¥1,860,000 → **¥1,240,000**

## Other Scholarships

Various organizations provide scholarships for international students in Japan, including Monbukagakusho Honors Scholarship for Privately-Financed International Students (48,000 yen/month) and Ishikawa Prefectural Scholarship for Privately Financed Foreign Students (20,000 yen/month).

For more information, check the website of Japan Student Services Organization (JASSO).

▶ [https://www.jasso.go.jp/ryugaku/scholarship\\_j/index.html](https://www.jasso.go.jp/ryugaku/scholarship_j/index.html)





# Preparing for Enrollment

## Flowchart up to Enrollment

- 1 Submit entry and application forms.   
 Entering in Oct.: Entry forms are accepted from May  
 Entering in April: Entry forms are accepted from October
- 2 Entering in April: Entry forms are accepted from October
- 3 Entrance examination results announcement
- 4 Pay the enrolment fee and submit enrolment forms.
- 5 The college applies for your Certificate of Eligibility for studying in Japan.  
\* You will be charged a handling fee of 10,000 yen.
- 6 Your Certificate of Eligibility and Acceptance Letter are sent to you.
- 7 Apply for your visa at the Embassy of Japan. → Your visa is granted.
- 8 Arrive in Japan. → Enrollment

### If you have a guarantor in Japan

We will interview and assess the guarantor on campus.

### If you don't have a guarantor in Japan

- You must pay a living expense deposit of 100,000 yen.
- If you'd like to be picked up at Kansai International Airport, you will be charged a pick-up fee of 30,000 yen.

\* Check the application guidelines for details.

## List of Living Expenses

Here is a list of monthly living expenses in Japan.

### Average monthly living expenses in Ishikawa

(These figures may vary widely depending on your personal circumstances and price rises.)

Rent	¥25,000 to ¥60,000 <small>* Initial fees will be charged in addition.</small>
Food expenses	¥30,000 and up
Commute cost	¥15,000 and up
Utility fees	¥15,000 and up
Other expenses	¥5,000 and up

\* Check our website for details on the initial fees.

▶ <https://www.kinjo.ac.jp/english/prospective/living.html>





## Access



### By Airplane

From Komatsu Airport: 40 -minute drive.

From Toyama Airport: 80 -minute drive.

From Kansai International Airport: 4 hours by train  
(3 hours, 50 minutes to Kaga-Kasama Station, then a 10-minute walk).

From Haneda Airport: 4 hours by train  
(3 hours, 50 minutes to Kaga-Kasama Station, then a 10-minute walk).

### By Train

From Kanazawa Station or Komatsu Station on the JR  
Hokuriku Main Line: 25 minutes  
(15-minute ride to Kaga-Kasama Station, then a 10-minute walk).

### By Bus

From Kanazawa Station: 60 minutes via Hokutetsu Bus  
(get off at Kinjo Daigaku bus stop).

### By Car

Take the Hokuriku Expressway to either Mikawa  
Interchange or Tokumitsu Smart Interchange, then a  
5-minute drive.



**KINJO UNIVERSITY  
KINJO COLLEGE**

<http://www.kinjo.ac.jp>

1200 Kasama-machi, Hakusan City,  
Ishikawa Prefecture 924-8511 Japan  
Tel: +81 (76) 276-4400